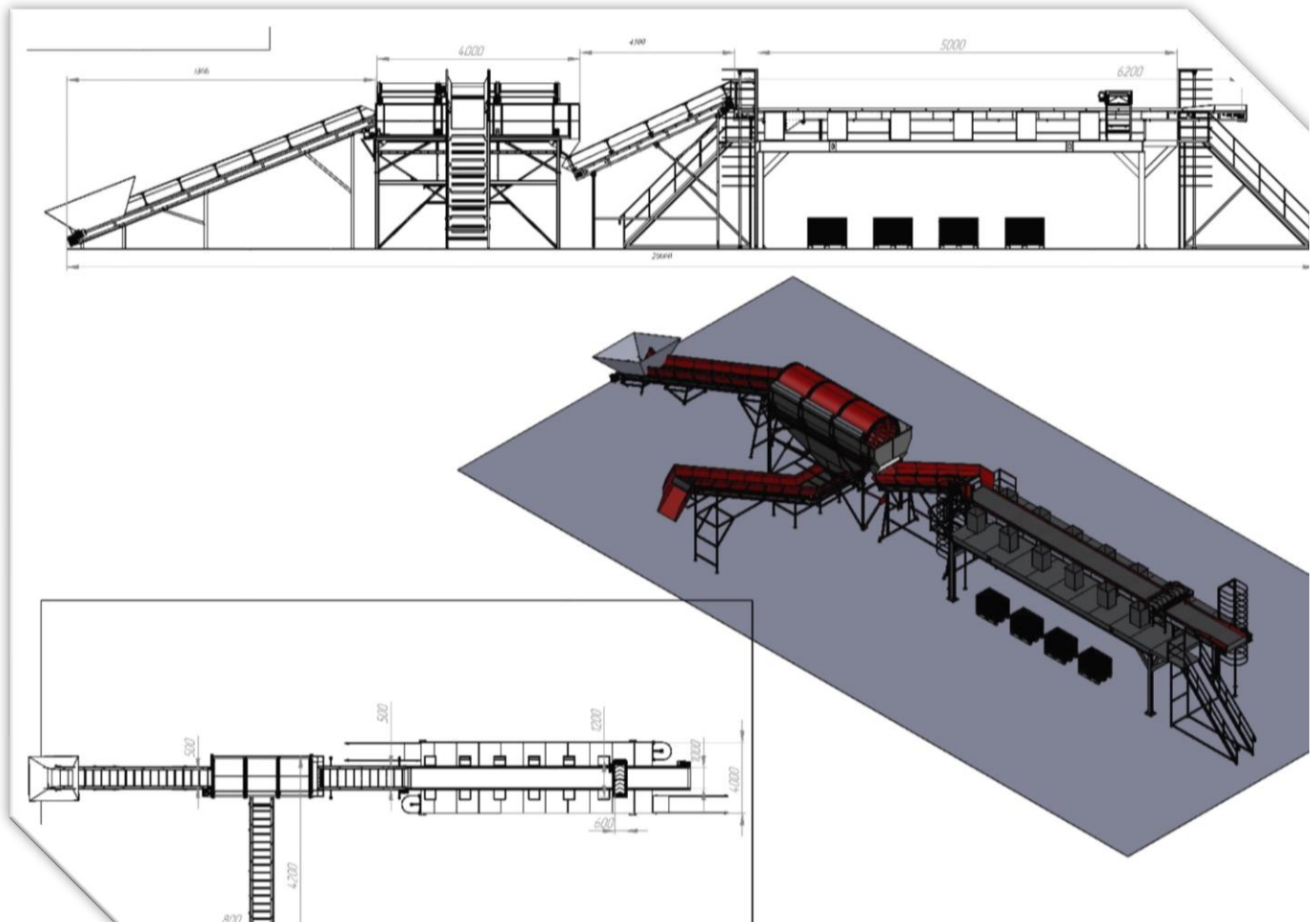


FACILITIES AND EQUIPMENT FOR SORTING SYSTEMS OF MUNICIPAL SOLID WASTE



PROCESSING OF MSW

The initially processing of municipal solid waste involves the use of various facilities and equipment to sort and separate from the main waste stream of the various types wastes as plastic, leather, glass, rubber, ferrous and non-ferrous metals, aggregates and components.

All facilities and equipment are tailored and sized according to the incoming waste flow of the installation, so as to achieve the maximum separation of recyclable fractions from the general flow and achieve the goals of reducing the outgoing flow for disposal.



RANGE OF EQUIPMENT

- Rotary drum sieves
- Flat vibrating sieves
- Belt conveyors
- Waste sorting cabins
- Magnetic separators
- PET perforators
- MSW horizontal balers
- Waste sorting containers
- Bag rippers
- Electrical control panels
- Support steel structures
- Stairs and platforms
- Steel halls and sheds

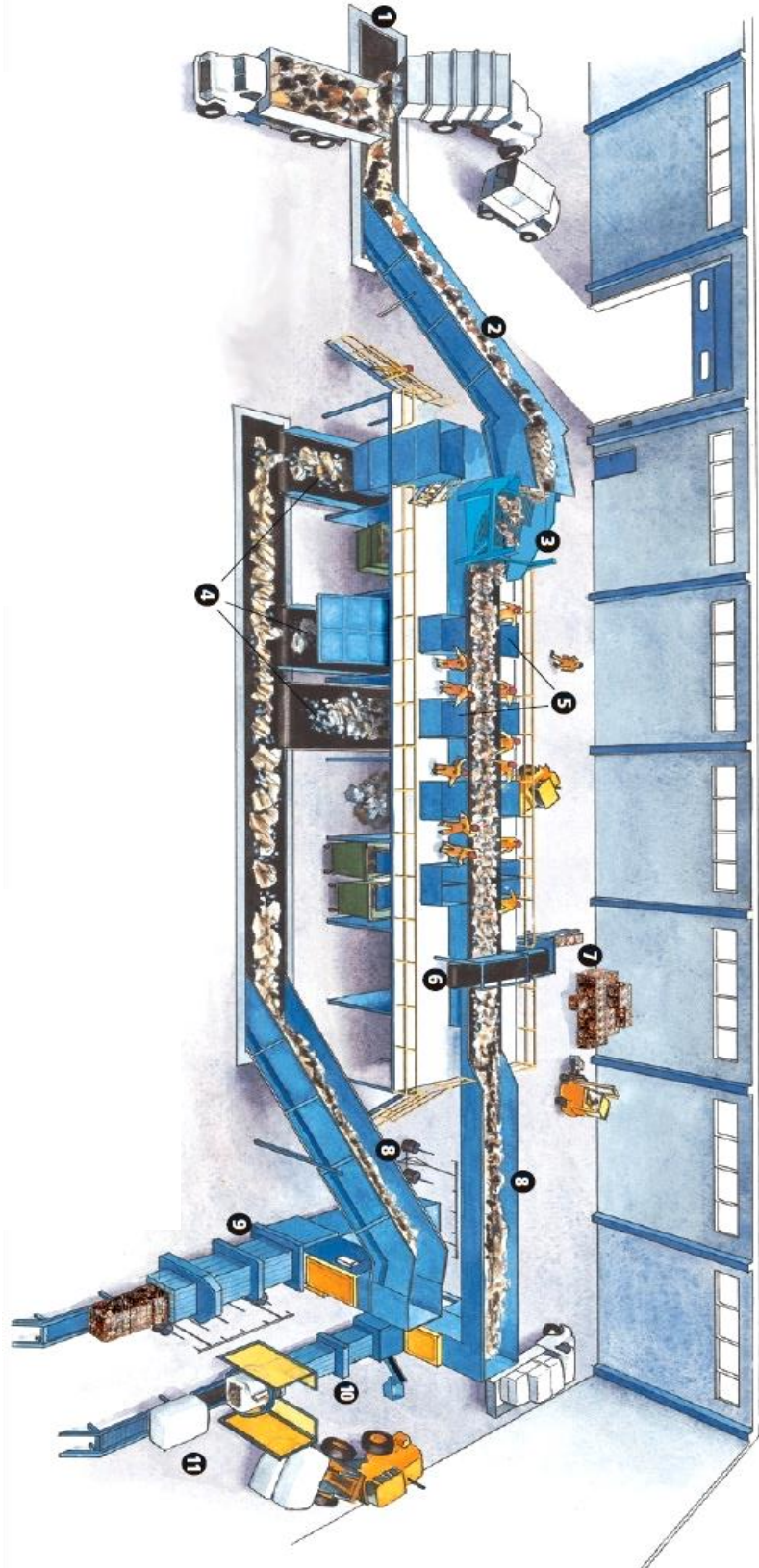


CONCEPTUAL SCHEME OF MSW SORTING

1. Receiving conveyor with integrated plastic bag tearing equipment
2. Inclined feed belt conveyor with paddles
3. Flat vibrating sieve or rotary drum sieve
4. Belt conveyors removing the separated waste fractions
5. Sorting station (type open space or covered work cabin) with belt conveyor, sliding valves, hoppers and containers for separation
6. Magnetic separator removing of ferrite fractions
7. Container for removed metal particles
8. Feed conveyors to baling machines
9. Horizontal baler for baling recycling waste
10. Baling residual waste for disposal
11. Wrapping bales with foil (optional)

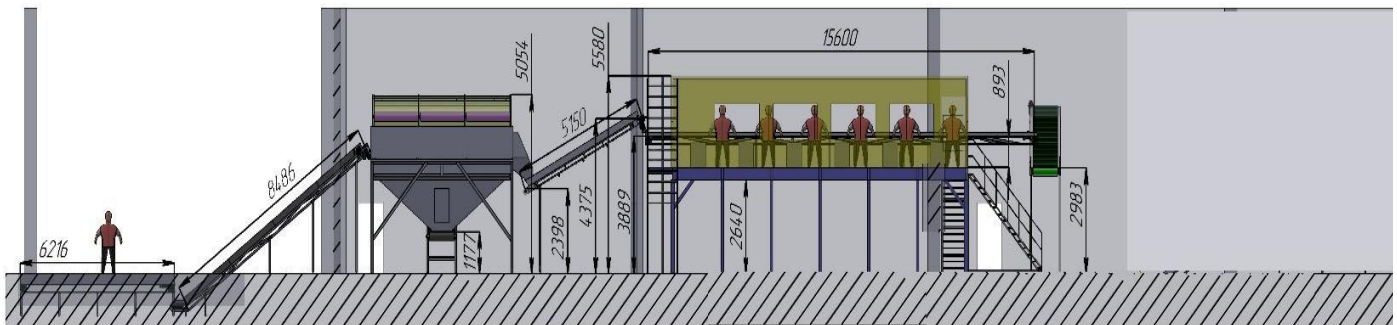
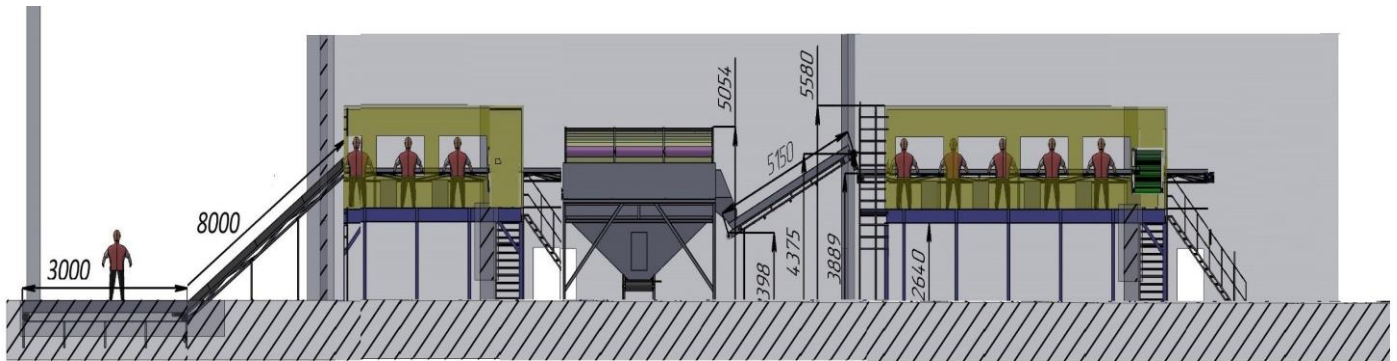
The shown scheme is conceptual.

The range of equipment may vary depending on the total waste volume, morphology, recycled fractions and specific project requirements.





EXAMPLE SCHEMES OF INSTALLATIONS FOR SORTING MUNICIPAL SOLID WASTE





USTREM JSC

METALWORKING COMPANY ESTABLISHED 1948



Registered ISO 9001:2008

BG-5250 Svishtov ❖ 78 Partriarch Euthymius Str. ❖ www.ustrem.eu ❖ ustrem.svishtov@gmail.com

GALLERY FACILITIES & EQUIPMENT



USTREM ► INOVATIONS ❖ QUALITY ❖ TRADITIONS ❖ EXPERIENCE